

## What's New on the Ranch

2701 Spuraway Avenue  
Coquitlam, BC V3C 2C4  
Tel: 604-464-6684 Fax: 604-937-8034



### October 24 - October 28, 2022

Date	Activities and Events
Monday, October 24 <sup>th</sup>	Hip Hop Dance and Scholastic Book Fair - All week
Tuesday, October 25 <sup>th</sup>	
Wednesday, October 26 <sup>th</sup>	Adventure Yoga-2:45-4
Thursday, October 27 <sup>th</sup>	Cucumber Free Thursday
Friday, October 28 <sup>th</sup>	Hot Lunch / PAC Pumpkin Carving - 5-7pm / Movie Night - 7:15 start

### *This Week in Review:*

Hello Everyone,

This was a busy week with our Earthquake Drill, Picture Day and Parent Teacher Meetings. I've attached Parent Emergency Evacuation information, which give you more information on all our emergency procedures and where we will gather in a situation where we have to evacuate.



If your child was absent on picture day, we will also have retakes on November 23.

Pumpkin Carving night is coming up next Friday evening. Information has already gone out yesterday morning. Preorder your pizza combo and book your pumpkin carving time at MunchALunch (Under "Order Lunch!"): <https://munchalunch.com/schools/ranchpark/>. **The order deadline is 10pm Sunday October 23.**

Next week we are very excited to have "Movin" coming to Ranch Park to teach our classes hip hop dancing. Thank you to our PAC for supporting this event.

We are also looking forward to the Scholastic Book Fair all next week. Ms. Caverly will take students through the book fair Monday and Tuesday, and students will be able to visit at lunch or afterschool on Wednesday and Thursday to make purchases.

For those planning ahead for Halloween Day, we recommend your child wear a costume they can manage themselves. We will have our costume parade outdoors just after recess on the gravel field.



I hope you all have a wonderful weekend.

Rob Killawee  
Principal  
Ranch Park Elementary



## Parent Information

### Mathematical terms

**Round to -** *make a number friendly by finding the closest multiple of 10.*

### Cucumber Free Thursday

We have a staff member who works on Thursdays at Ranch Park with a significant allergy to cucumbers. Please avoid sending cucumbers in your child's lunch on Thursdays.

### PAC Opportunities

If you want to stay connected with PAC information and events, consider connecting to the [PAC Facebook Page](#).

### PAC Support

You can also support our school through direct PAC donation. Please check your email for the School Cash Online link for PAC donation, and to sign up to receive information directly from the PAC.



### Reporting Absences

We encourage you to report absences and lates through the "Absence Report" link on the website. It is on the right-hand side, under "Quick Links. You can also [bookmark this link](#) on your phone or browser so you always have it.

### Grade 5 Fundraising

You can support our Grade 5 activities through purchasing Tru-Earth laundry products at <https://fundraising.tru.earth/RPGrade5>.



the  
Lunch  
Lady

The "Lunch Lady" program is up and running. Deliveries on **Mondays**. Visit <http://www.thelunchlady.ca> for information.



---

## Student Goal of the Week:

**Core Competency:** Critical Thinking

**Facet:** Analyze and Critique

**Goal Statement:** "I can show if I like something or not."

---

# November 2022

Sun	Mon	Tue	Wed	Thu	Fri	Sat
		1	2 <i>Adventure Yoga-2:45-4</i>	3	4 <i>Hoop Dancer 1:00 Gym</i>	5
6 <i>Daylight Savings Time ends</i>	7	8	9 <i>PAC Meeting 7—8:30 Adventure Yoga-2:45-4</i>	10 <i>Remembrance Day Ceremony FSA Closes</i>	11 <i>Remembrance Day</i>	12
13	14	15 <i>Fire Drill</i>	16 <i>Adventure Yoga-2:45-4</i>	17	18 <i>Hot Lunch - White Spot</i>	19
20	21	22	23 <i>Picture Retake Day Adventure Yoga-2:45-4</i>	24	25 <i>Treat Day</i>	26
27	28	29	30 <i>Adventure Yoga-2:45-4</i>			



**Pumpkin Carving & Movie Night**  
**Friday, October 28, 2022**

**Order Deadline: Sunday, October 23, 2022 at 10:00 PM**

<b>Menu Items</b>	<b>Price</b>
<b>Pizza One Large Pizzas (10 Slices)</b>	
Large Cheese Pizza	\$18.00
Large Ham & Pineapple Pizza	\$18.00
Large Pepperoni Pizza	\$18.00
Large Vegetarian Pizza	\$18.00
<b>Drinks</b>	
Bottle Water	\$1.75
Bubly Grape - Sparking Water	\$1.75
Bubly Lime - Sparking Water	\$1.75
Bubly Strawberry - Sparking Water	\$1.75
Oasis Apple Juice	\$1.75
Oasis Orange Juice	\$1.75
<b>Chips</b>	
Doritos Nacho Cheese	\$2.00
Lay's Classic Plain	\$2.00
<b>TCBY Frozen Yogurt</b>	
Frozen Yogurt Chocolate	\$3.00
Frozen Yogurt Strawberry	\$3.00
Frozen Yogurt Vanilla	\$3.00

**\*\* Family Fun Pizza Special – 1 Large Pizza & 4 Drinks - \$25.00\*\***

**Please Select Session Time Slot In Munch A Lunch When**

**Placing Pizza Order(s) For Pumpkin Carving:**

**Pizza & Pumpkin Carving Session 1 – 5:00pm-6:00pm**

**Pizza & Pumpkin Carving Session 2 – 6:00pm-7:00pm**

**Movie Time: 7:15pm-8:30pm**

For any questions, enquiries, and to volunteer

Please Email: [rphotlunch@hotmail.com](mailto:rphotlunch@hotmail.com)



# School Emergency Preparedness Information

Learning for a Lifetime

Serving the communities of Anmore, Belcarra, Coquitlam, Port Coquitlam and Port Moody

## IMPORTANT EMERGENCY PREPARATION INFORMATION FOR STUDENTS & THEIR FAMILIES

Please read the following information and talk to your child to ensure that you and your family respond appropriately and effectively to an emergency situation at the school.

Your informed and measured response will help the school to manage the emergency effectively and will assist the student release procedures that your school has put in place.

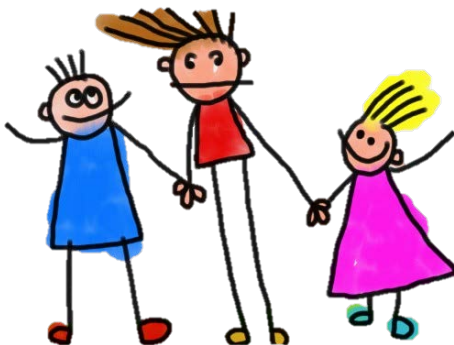
### STUDENT RELEASE PROCEDURES

In case of an incident at the school or in the community, it may be required to release students to parents/ guardians from the school or school grounds or move students from the school area to an alternate location for release. These are the procedures for our school **Ranch Park**:

1. Students will be released from the school, outdoor evacuation area or alternate location subject to the situation.
2. Our outdoor evacuation area is our gravel field. If we need to move from the school grounds, we will relocate to:

Alternate Location #1: Coquitlam Alliance Church  
Alternate Location #2: Dr. Charles Best Secondary

3. The school and school district will communicate with parents on information about picking up their child via email when possible, and school/district websites.



## WHAT IS STUDENT RELEASE?

In the event of an earthquake or other necessary situation, the school will implement a controlled release of students for their safety and wellbeing.

Should this be necessary, the school will only release your child to **an authorized adult** as identified on your “Student Identification Emergency Release Form”, or if necessary, to emergency medical personnel. Your identified alternative(s) has been authorized to pick up your child should you be unable to reach the school. Designated alternatives should live within walking distance of the school, if possible.

In the event of a situation requiring release, the school will respond as follows:

- The “Student Identification Emergency Release Form”, which is filled in by parents usually in September and kept on file, will provide the necessary information for student release.
- Students will be released from the school **to an authorized adult** (as listed on the “Student Identification Emergency Release Form”) and when it is deemed safe to do so.

When Emergency Responders and the School Board Emergency Operations Centre (EOC) has given clearance for student pick up, parents will be notified and allowed to pick up their child.

These School District Student Release Procedures have been developed with your child’s safety as the top priority.



# School Emergency Preparedness Information

Learning for a Lifetime

Serving the communities of Anmore, Belcarra, Coquitlam, Port Coquitlam and Port Moody

## FAMILY EMERGENCY PREPAREDNESS

You need to be ready to care for your family and respond effectively after an emergency or disaster, whether at home, school or work. Preparing ahead can reduce the fear, anxiety and loss that can accompany an emergency event.

Consider signing up for one of the Tri-City's free emergency preparedness workshops. You will be better able to help family and friends.

For more information on workshops, call the Emergency Program Manager for:

- Coquitlam at 604-927-6428 or email: [emergencyprogram@coquitlam.ca](mailto:emergencyprogram@coquitlam.ca);
- Port Coquitlam at 604-927-5466;
- Port Moody at 604-469-4542

You can help the school be prepared by promptly returning any **Student Identification Emergency Release Forms** that come home for parents to complete. Without these the process to release your child will be slowed down – both in our practice drill and in the event of a real emergency.

## TALK TO YOUR CHILD

We strongly recommend that you speak to your child about the following:

- That **their school has emergency plans** in place to ensure student safety immediately following an emergency or disaster event.
- The potential risk of **gas leaks, downed "live" power lines, debris, etc.** which may make streets and roads impassable and therefore not safe for your child to attempt to walk home.

- The **importance of remaining at the school** until given instructions by authorized school staff. Students will NOT be permitted to leave to pick up younger siblings at nearby schools.
- The **importance of the student release procedures** at the school and that you and your child need to follow the school student release procedures.

## DO'S & DON'TS

Please ...

- **DO check the school or district website ([www.sd43.bc.ca](http://www.sd43.bc.ca))** for information and updates, follow SD43's Twitter feed @sd43bc.
- **DON'T trust or share unofficial information** on non-SD43 websites or social media channels which can be inaccurate, and lead to misinformation and anxiety.
- **DON'T phone the school following an emergency or disaster event.** Telephone lines may be needed for emergency communications.
- **DO walk to the school if possible or necessary** once authorization to pick up your child has been given.
- **DON'T drive!** Streets may be littered with debris. School access routes and street entrances must remain clear for emergency vehicles.
- **If you are at home, DO ensure your home is safe** to return to with your child.

**For more information, please contact:**

Robert Zambrano or Ken Hoff  
School District No. 43 (Coquitlam)  
at 604-939-9201 or [www.sd43.bc.ca](http://www.sd43.bc.ca).





# Emergency Procedure Information for Parents

*Serving the communities of Anmore, Belcarra, Coquitlam, Port Coquitlam and Port Moody*

**During an emergency five key responses can be implemented based on situation and context. Regular school safety drills are conducted throughout the year.**

## DROP, COVER & HOLD ON

Used in the event of an earthquake or explosion.

Procedures:

- DROP to the ground.
- Take COVER under a sturdy desk or table, and
- HOLD ON until the shaking stops.
- Wait 60 seconds and then EVACUATE (see Evacuation Procedures).

## EVACUATE

Used when a building or area becomes unsafe due to: fire, flood, chemical accident or following an earthquake.

Procedures:

- Exit the building via the pre-planned shortest safe route.
- Report to designated assembly area.

## SHELTER IN PLACE

Used when personal safety is in danger if anyone leaves the building. Usually associated with an environmental hazard outside such as a gas leak, chemical spill, or wild animal near the building (e.g. cougar or bear).

Procedures:

- Return to building from outside and stay indoors.
- Continue normal activities within building.
- Close exterior doors and windows.
- Turn off ventilation and heat, tape window seams if applicable.
- DO NOT approach the site until clearance has been given by school district or emergency personnel.

## HOLD AND SECURE

Used to secure building because of an emergency situation outside such as a police incident (e.g. suspect pursued by police near building). Allows building to continue with the normal day but forbids outside activity and unnecessary room-to-room transit.

Procedures:

- Close and lock exterior doors and windows- monitor main entrance.
- DO NOT allow unauthorized personnel into building.
- Continue activities inside as per usual; limit internal movement if necessary.
- DO NOT approach the site until clearance has been given by school district or emergency personnel.

## LOCKDOWN

Used when there is an immediate and imminent threat to the building population. Most commonly implemented when the building has an active intruder.

Procedures:

- Close and lock exterior doors and windows, secure and barricade doors.
- Stay or gather into a secure room as quickly as possible.
- Turn out lights, pull shades.
- Get out of line of sight of doors and windows, hide, don't talk.
- Turn off and do not use cell phones.
- Normal activity ceases. Await police response.
- DO NOT approach the site until clearance has been given by school district or emergency personnel.

**During an emergency we ask parents not to call the school as telephone lines may be needed for emergency communications. Please monitor school email and school or district websites for official information and updates.**

## STUDENT RELEASE

In case of an incident at the school or in the community, it may be required to release students to parents/guardians from the school or school grounds or move students from the school area to an alternate location for release. For more information, please refer to your **School Emergency Preparedness Information** flyer.